



# OEM/ODM FACTORY

NANPI XINJIUXINJI HARDWARE  
MANUFACTURING CO.,LTD.



Official website: <http://www.xinjiuxinji-hardware.com>

# COMPANY PROFILE



Factory Since  
1999



ISO 9001  
Certification

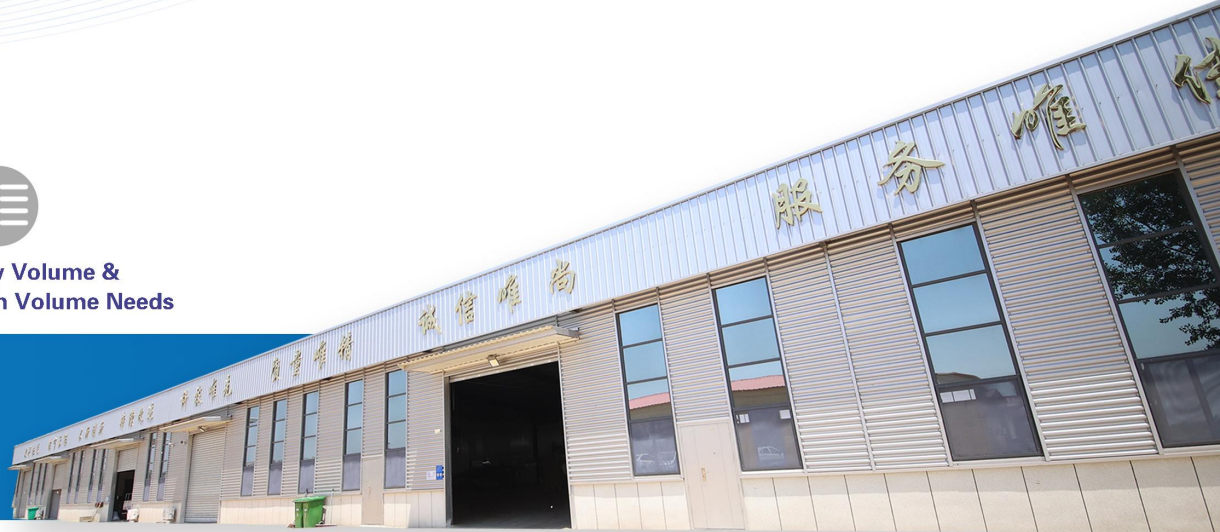


100+ metal  
materials available



Low Volume &  
High Volume Needs

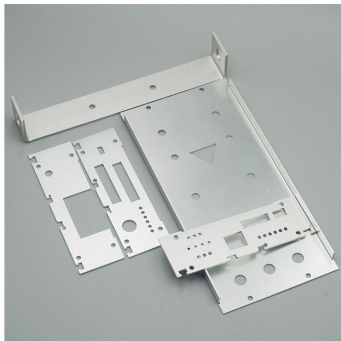
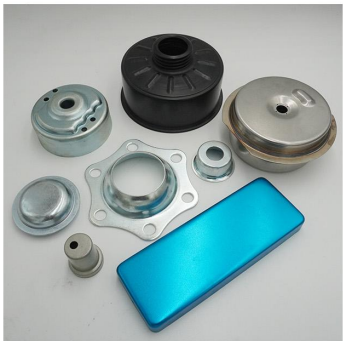
QUALITY FIRST  
STABILITY ALWAYS



Xinjiuxinji is a professional metal custom fabrication factory in China. Since 1999, we have been providing metal fabrication services to the world. Our factory close to Beijing and Tianjin Covering an area of 8,000 square meters. The existing staff 120 people. can create almost any metal project.

Xinjiuxinji as a metal fabrication factory main business is OEM metal fabrication . We are good at metal stamping, CNC machining, deep drawing, laser cutting, bending, welding, drilling, grinding, spinning, die casting , etc. With these process capabilities we can create almost any metal project.



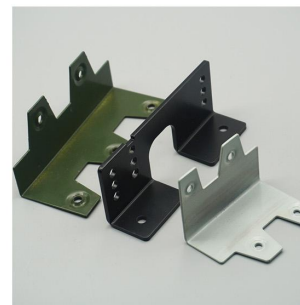


# CUSTOMIZED PRODUCT DISPLAY



## Rich Experience In Customizing Metal Parts: 70,000+ Types Customized

Over the years, our metal fabrication factory have customized more than 70,000 kinds of metal parts. These include chassis, cabinets, housings, brackets, frames, etc., ranging from 0.5cm gaskets to 4-meter-high insulation boxes. They involve automobiles, electronics, energy, medical care, home gardening, agricultural equipment and other fields, providing related metal customization services worldwide.



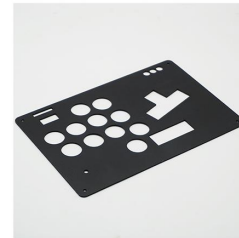
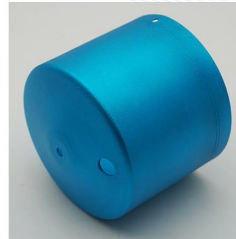
# CUSTOMIZED PRODUCT DISPLAY







# CUSTOMIZED PRODUCT DISPLAY



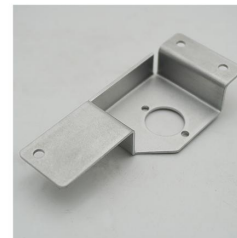
# CUSTOMIZED PRODUCT DISPLAY



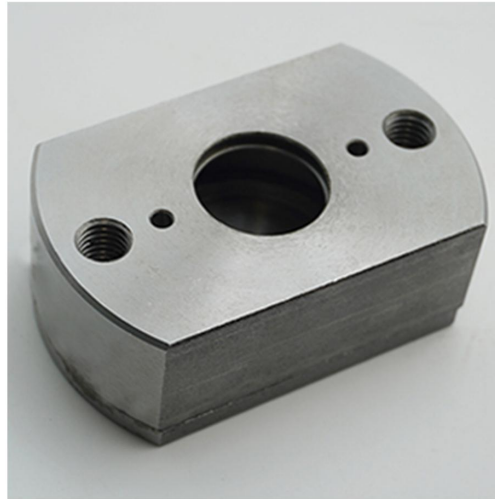




# CUSTOMIZED PRODUCT DISPLAY



# CUSTOMIZED PRODUCT DISPLAY







# CUSTOMIZED PRODUCT DISPLAY

